

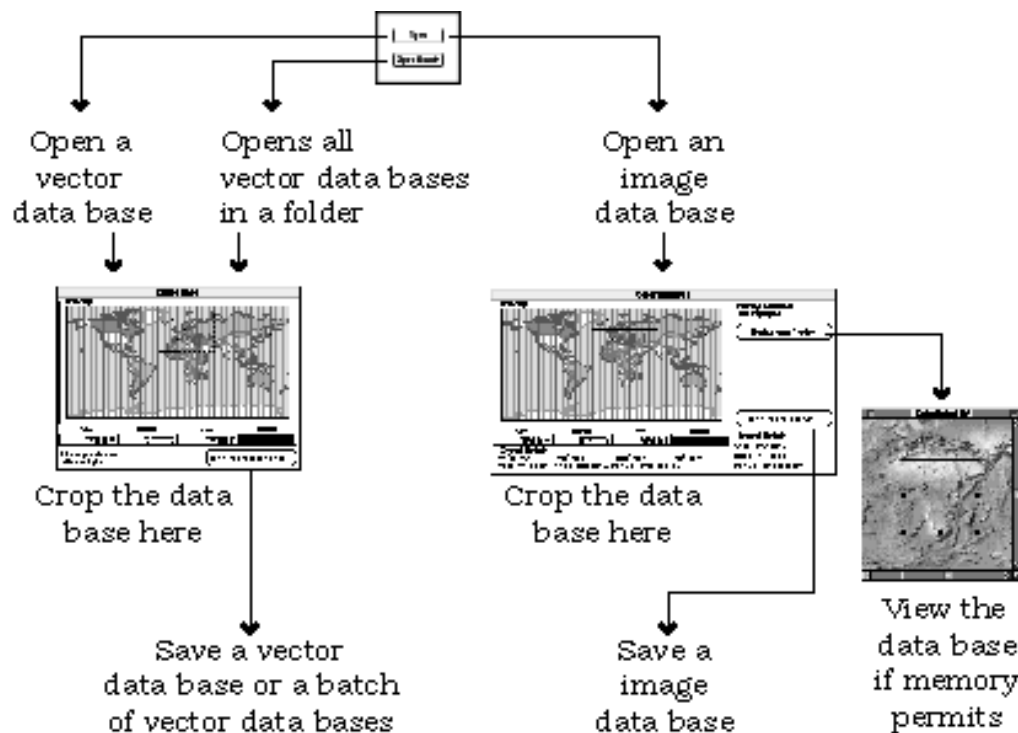
## Using the CropDataBase program



The purpose of CropDataBase is to save you time when working with Geocart and large data bases. CropDataBase does this by eliminating all data in a data base that is outside the map boundaries. The program can crop Geocart vector data bases and Geocart image data bases.

When Geocart projects a vector or image data base it examines every point in the data base. If the point is on the map, the point is drawn. If the point is not on the map Geocart moves on to the next point. When projecting large data bases Geocart spends most of its time examining points that are not on the map. By cropping the data base first with CropDataBase it is possible to dramatically reduce the time Geocart will take to draw the map.

The schematic diagram below gives a brief over view of how CropDataBase works.



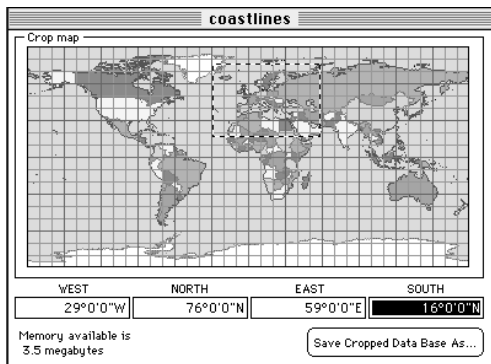
When the program starts a small window with two buttons is presented to you. The Open button lets you open either an vector data base or a image data base. The Open Batch button lets you open all the vector data base files in a folder.

## Cropping vector data bases

When you click on the Open button, or alternatively choose Open (command-o) from the file menu, you are presented with a standard file open dialogue box.

When you click on the Open Batch button, or choose Open Batch from the file menu, you are also presented with a standard file open dialogue box. All the files in the same folder as the file you open will be examined and if they are Geocart vector data bases they will be cropped. Thus the program can batch process all the files in a single folder (files in sub-folders will not be cropped.)

When you open a vector database or a batch of vector data bases you are presented with the window below. CropDataBase can crop Geocart binary vector data base or Geocart text data bases. (The program can not crop Geocart Labels data bases.) The format for text data bases is described in the Geocart manual. You can also use CropDataBase to translate text data bases into binary data bases and back again. The advantage of binary data bases is that Geocart projects them faster. The advantage of the text data bases is that you can view and edit the coordinates with a word processing program.

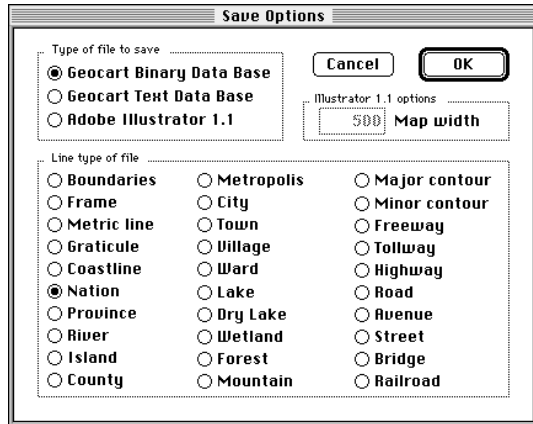


To crop the data base either click and drag on the map to define boundaries or type in the latitude and longitude coordinates of the boundaries below the map.

Once you have defined your boundaries press the button at the bottom of the window or choose Save from the file menu. You will be presented with a standard Save file dialogue box. If you are cropping a single file you will be prompted to name the cropped version of the data base. If you are cropping a batch of files you will be prompted to provide a name for the folder where all the cropped data bases will be saved. A new folder will be created with this name and all the databases will be saved within it. CropDataBase will name each file with the original file name plus the extension " cropped". Only data bases with actual data within the boundaries will be saved.

After clicking on Save you will be presented with the dialogue box shown on the next page. In the upper left click on the type of file you want to save. CropDataBase can save three types of vector files. The Geocart binary data base is the most efficient and Geocart project them with maximum speed. Use the Geocart text data base if you want to be able to edit your cropped data base with a word processing program or spread sheet program. Choose Adobe Illustrator 1.1

format if you want to bypass Geocart and save an Adobe Illustrator file. The projection for maps saved in Illustrator format is the Plate Carree centered on the equator.



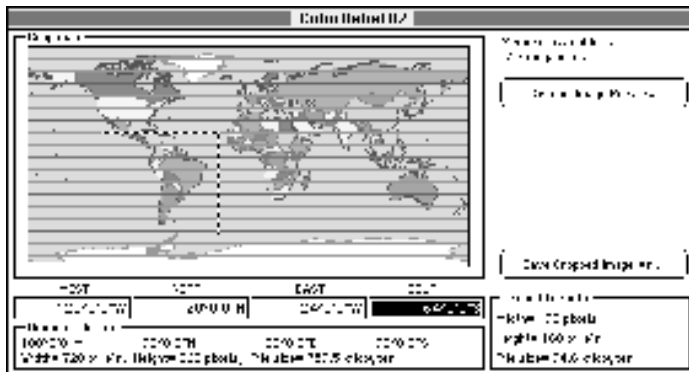
The area at the bottom of the window will show which type of line the file represents. If the file has no line type it will be marked as Boundaries line type. Click on a different radio button to change the file's line type. If you are cropping a batch of files you will not have the option to set the line type. Each cropped file will be set to the same line type as the original file. If the original file has no line type specified the cropped data base will be marked as Boundaries line type.

If you are saving an Adobe Illustrator 1.1 file you can enter a width for your map in points. The map will be scaled to

fit this width.

## Cropping image data bases

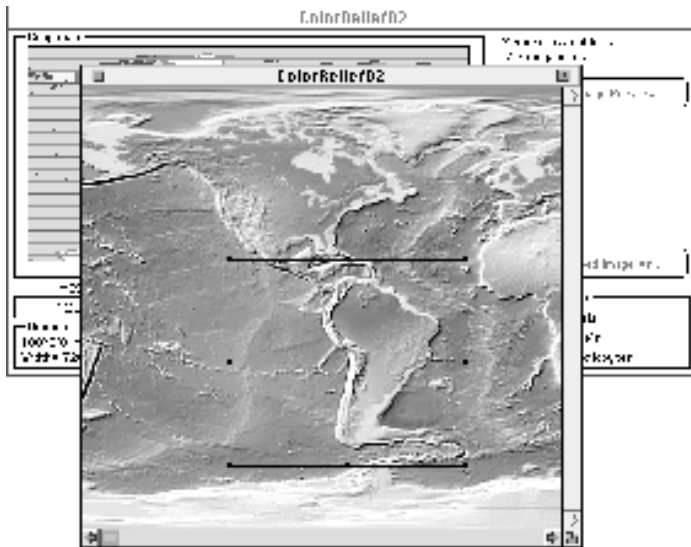
CropDataBase can crop Geocart Image data bases. The program, however, can not batch process image data bases. They must be cropped one at a time.



Choose the Open command from the File menu and open the image data base that you want to crop. A window will open with a map showing the area that the data base covers.

You can crop the data base by drawing a marquee with the cursor on the map or by typing the longitude and latitude in the edit fields below the map. You can type numbers in decimal degree format (example: -67.235) (west and south being negative), or in degree-minute-second format using the degree symbol "°" (option - shift -8) and single and double quote symbols for minutes and seconds.

If you give CropDataBase enough memory you can display the data base itself by pressing the Display Image Preview button. The database will be loaded into a window in which you may also crop the data base.



After cropping you can save the cropped image data base using the Save command in the File menu or by pressing the Save Cropped Image As button.

Geocart image data bases can be opened with Adobe Photoshop, but first you must know how wide and tall the image is. Open it with Crop-Image and note the file width and height in pixels. In Photo-shop open it as a Raw format file. How

you do this depends on the Photoshop version. Enter the width and height in the window that appears, enter 3 in the Channels field and make sure the Interleaved box is checked. Enter 128 in the Header field. Also check the Retain Header When Saving box. When saving Image data bases from Photoshop make sure the file type and creator are set correctly. The file type should be GeoR and the creator should be GeoC .